

Computing Edge Version of Mec Index of Nanostar Dendrimers

Ali Nejati, Mohammad Rahgoshay, Mehdi Alaeiyan, Mohammad Maghasedi

Department of Mathematics, Karaj Branch, Islamic Azad University, Karaj, Iran.

Abstract—Let G be a molecular graph, the *edge modified eccentric connectivity index* of G is defined as $\Lambda_e(G) = \sum_{f \in E(G)} S_f \cdot ecc(f)$, where S_f is the sum of the degrees of neighborhoods of an edge f and $ecc(f)$ is its eccentricity. In this paper an exact formula for the edge modified eccentric connectivity index of a class of nanostar dendrimers was computed.

Keywords—edge modified eccentric connectivity index, nanostar dendrimers, eccentricity.

Copyright© 2019. Published by UNSYSdigital. All rights reserved.
DOI: [10.21535/just.v7i2.1029](https://doi.org/10.21535/just.v7i2.1029)

I. INTRODUCTION

MOLECULAR descriptors are playing significant role in chemistry, pharmacology, etc. Among them, topological indices have a prominent place. There are numerous of topological descriptors that have found some applications in theoretical chemistry, especially in QSPR/QSAR research.

More recently, a new topological index, eccentric connectivity index, has been investigated. This topological model has been shown to give a high degree of predictability of pharmaceutical properties, and may provide leads for the development of safe and potent anti-HIV compounds. We encourage the reader to consult papers [1]-[9] for some applications and papers [10]-[13] for the mathematical properties of this topological index.

Dendrimers are highly branched macromolecules. They are being investigated for possible uses in nanotechnology, gene therapy, and other fields. Each dendrimer consists of a multifunctional core molecule with a dendritic wedge attached to each functional site. The core molecule without surrounding dendrons is usually referred to as zeros generation. Each successive repeat unit along all branches forms the next generation, 1st generation and 2nd generation and so on until the terminating generation. The topological study of these macromolecules is the aim of this article, see [14][15][16] for details.

Now, we introduce some notation and terminology. Let G be a graph with vertex set $V(G)$ and edge set (G) . Let $\deg(u)$ denote the degree of the vertex u in G . If $\deg(u) = 1$, then u is

said to be a *pendent vertex*. An edge incident to a pendent vertex is said to be a *pendent edge*. For two vertices u and v in $V(G)$, we denote by $d(u, v)$ the distance between u and v , i.e., the length of the shortest path connecting u and v . The *eccentricity* of a vertex u in $V(G)$, denoted by $ecc(u)$, is defined to be

$$ecc(u) = \max(d(u, v) | v \in V(G)) \quad (1)$$

The *diameter* of a graph G is defined to be $\max(ecc(u) | u \in V(G))$. The *eccentric connectivity index*, $\xi^C(G)$, of a graph G is defined as

$$\xi^C(G) = \sum_{u \in V(G)} \deg(u) \cdot ecc(u) \quad (2)$$

where $\deg(u)$ is the the degree of a vertex u and $ecc(u)$ is its eccentricity. The *modified eccentric connectivity index* of G (MEC index of G) is defined as $\Lambda(G) = \sum_{u \in V(G)} S_u \cdot ecc(u)$, where S_u is the sum of the degrees of neighborhoods of a vertex u and $ecc(u)$ is its eccentricity.

Let $f = u \cdot v$ be an edge in $E(G)$. Then the degree of the edge f is defined to be $\deg(u) + \deg(v) - 2$. For two edges $f_1 = u_1 \cdot v_1$, $f_2 = u_2 \cdot v_2$ in $E(G)$, the distance between f_1 and f_2 , denoted by $d(f_1, f_2)$, is defined to be $d(f_1, f_2) = \min(d(u_1, u_2), d(u_1, v_2), d(v_1, u_2), d(v_1, v_2))$. The *eccentricity* of an edge f , denoted by $ecc(f)$, is defined as

$$ecc(u) = \max(d(f, e) | e \in E(G)) \quad (3)$$

The *edge eccentric connectivity index* of G [17], denoted by $\xi_e^C(G)$, is defined as

$$\xi_e^C(G) = \sum_{f \in E(G)} \deg(u) \cdot ecc(u) \quad (4)$$

Also the *edge modified eccentric connectivity index* of G is defined as $\Lambda_e(G) = \sum_{f \in E(G)} S_f \cdot ecc(f)$, where S_f is the sum of the degrees of neighborhoods of an edge f and $ecc(f)$ is its eccentricity.

The second and fourth authors of this paper in some joint works computed some topological indices related to eccentricity of some molecular graphs ([18][21]). In this paper we compute the edge version of MEC index of a class of nanostar dendrimers.

II. MAIN RESULT AND DISCUSSION

Now we consider another class of dendrimer $NS_5(n)$, where $n \geq 1$ denotes the steps of growth depicted in Figure 1. In [22], Nilanjan presented exact expressions for the F-index and F-polynomial of $NS_5(n)$. Now in the following theorem we calculate the edge modified eccentric connectivity index of $NS_5(n)$.

Theorem 1. The edge modified eccentric connectivity index of $NS_5(n)$ is computed as

$$\Lambda_e(NS_5(n)) = (1830 + 4800 \times 2^n)n + 9354 \times 2^n + 8070 \quad (5)$$

Proof. Considering Figure 2 and

Table 1, it can be seen that we have $5n + 13$ types of edges in $NS_5(n)$ based on their eccentricities. We have $3 \times 2^{n+2}$ numbers of edges of type 1 with maximum eccentricity equals to $10n + 26$ (red edges). Also we have $3 \times 2^{n+1}$ numbers of edges of types 2 and 3 with eccentricity equals to $10n + 25$ and $10n + 24$ respectively. The number of edges of type 4 are 3×2^n and their eccentricity is $16n + 23$. So it continues until we have six edges of type $5n + 12$ with eccentricity equals to $8n + 15$ and finally there are nine edges of type $5n + 13$ with minimum eccentricity equals to $5n + 14$ (blue edges).

Also it is clear that for any edge f in $NS_5(n)$, we have $S_f \in \{5,6,7,8,9,10,11,12,13,14\}$. (See

Table 1).

Therefore we have

$$\begin{aligned} \Lambda_e(G) &= \sum_{f \in E(G)} S_f \cdot \text{ecc}(f) \\ &= (3 \times 2^{n+1} \times 6 \times (10n + 26)) + (3 \times 2^{n+1} \times 8 \times (10n + 26)) \\ &+ \sum_{k=2}^n (3 \times 2^{n-k+2} \times (8 + 9) \times (10n - 5k + 31)) \\ &+ (3 \times 2^{n+1} \times 8 \times (10n + 25)) \\ &+ \sum_{k=2}^n (3 \times 2^{n-k+2} \times 9 \times (10n - 5k + 30)) \\ &+ \sum_{k=2}^n (3 \times 2^{n-k+2} \times 9 \times (10n - 5k + 29)) \\ &+ \sum_{k=2}^n (3 \times 2^{n-k+1} \times 8 \times (10n - 5k + 28)) \\ &+ \sum_{k=2}^{n-1} (3 \times 2^{n-k+1} \times 6 \times (10n - 5k + 27)) \\ &+ (6 \times (5n + 27) \times 5) + (6 \times (5n + 26) \times 5) \\ &+ (6 \times (5n + 25) \times 10) + (3 \times (5n + 25) \times 14) \\ &+ (6 \times (5n + 24) \times (14 + 11)) + (9 \times (5n + 23) \times 14) \\ &+ (6 \times (5n + 22) \times 11) + (6 \times (5n + 21) \times 10) \\ &+ (3 \times (5n + 20) \times 12) + (6 \times (5n + 19) \times 9) \\ &+ (6 \times (5n + 8) \times 6) + (6 \times (5n + 17) \times 8) \\ &+ (3 \times (5n + 16) \times 9) + (3 \times (5n + 15) \times (9 + 7)) \\ &+ (3 \times (5n + 14) \times 11) + (6 \times (5n + 14) \times 10) \end{aligned} \quad (6)$$

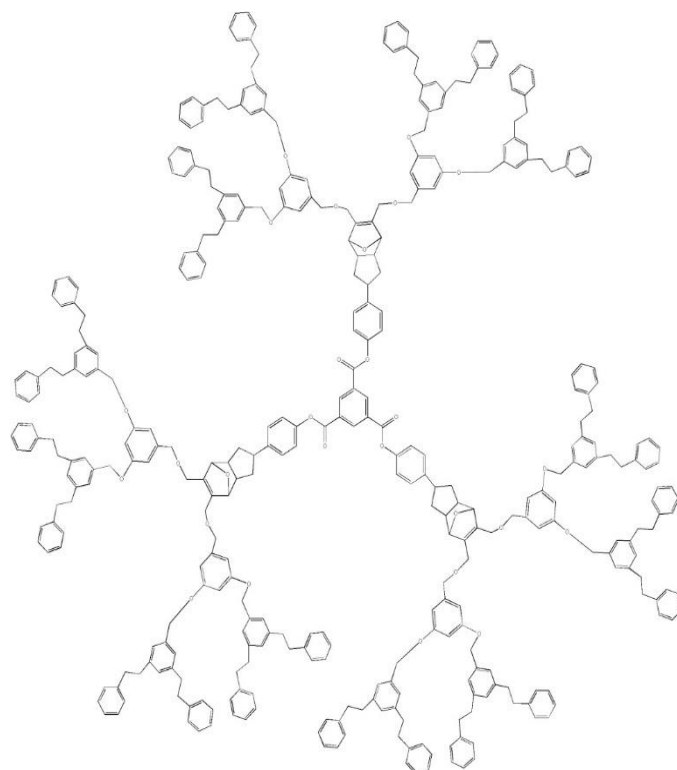


Figure 1 The molecular graph of $NS_5(n)$

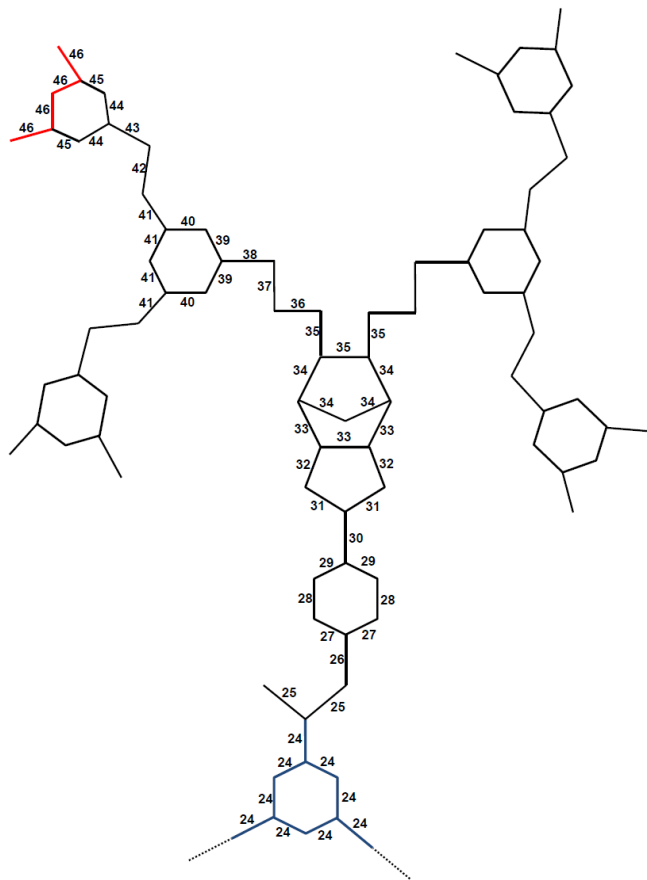


Figure 2 The eccentricity of edges in a third of $NS_5(2)$

Table 1 Types of edges in $NS_5(n)$

Types of Vertices	Num	$ecc(f)$	S_f
1	$3 \times 2^{n+1}$	$10n + 26$	6
1	$3 \times 2^{n+1}$	$10n + 26$	8
2	$3 \times 2^{n+1}$	$10n + 25$	8
3	$3 \times 2^{n+1}$	$10n + 24$	9
4	$3 \times 2^{n+1}$	$10n + 23$	8
5	$3 \times 2^{n+1}$	$10n + 22$	6
6	$3 \times 2^{n+1}$	$10n + 21$	8
6	$3 \times 2^{n+1}$	$10n + 21$	9
⋮	⋮	⋮	⋮
$5n$	6	$5n + 27$	5
$5n + 1$	6	$5n + 26$	5
⋮	⋮	⋮	⋮
$5n + 10$	6	$5n + 17$	8
$5n + 11$	3	$5n + 16$	9
$5n + 12$	3	$5n + 15$	9
$5n + 12$	3	$5n + 15$	7
$5n + 13$	3	$5n + 14$	11
$5n + 13$	6	$5n + 14$	10

Thus we have

$$\Lambda_e(NS_5(n)) = (1830 + 4800 \times 2^n)n + 9354 \times 2^n + 8070 \quad (7)$$

Then this proof is completed.

REFERENCES

- [1] Dureja, H., Madan, A.K., "Topochemical models for the prediction of permeability through blood-brain barrier", *Int. J. Pharm.*, vol. 323, pp. 27-33, 2006.
- [2] Dureja, H., Madan, A.K., "Topochemical models for prediction of cyclindependent kinase 2 inhibitory activity of indole-2-ones", *J. Mol. Model.*, vol. 11, pp. 525-531, 2005.
- [3] Dureja, H., Madan, A.K., "Predicting anti-HIV activity of dimethylaminopyridin-2-ones: Computational approach using topochemical descriptors", *Chem. Biol. Drug Des.*, vol. 73, pp. 258-270, 2009.
- [4] Kumar, V., Madan, A.K., "Application of graph theory: Models for prediction of carbonic anhydrase inhibitory activity of sulfonamides", *J. Math. Chem.*, vol. 42, pp. 925-940, 2007.
- [5] Kumar, V., Madan, A.K., "Application of graph theory: Prediction of cytosolic phospholipase A(2) inhibitory activity of propan-2-ones", *J. Math. Chem.*, vol. 39, pp. 511-521, 2007.
- [6] Lather, V., Madan, A.K., "Application of graph theory: Topological models for prediction of CDK-1 inhibitory activity of aloisines", *Croat. Chem. Acta*, vol. 78, pp. 55-61, 2005.
- [7] Sardana, S., Madan, A.K., "Application of graph theory: Relationship of antimycobacterial activity of uinolone derivatives with eccentric connectivity index and Zagreb group parameters", *MATCH Commun. Math. Comput. Chem.*, vol. 45, pp. 35-53, 2002.
- [8] Sardana, S., Madan, A.K., "Application of graph theory: Relationship of molecular connectivity index, Wiener index and eccentric connectivity index with diuretic activity", *MATCH Commun. Math. Comput. Chem.*, vol. 43, pp. 85-98, 2001.
- [9] Sharma, V., Goswami, R., Madan, A.K., "Eccentric connectivity index: A novel highly discriminating topological descriptor for structure-property and structure-activity studies", *J. Chem. Inf. Model.*, vol. 37, pp. 273-282, 1997.
- [10] Morgan, M.J., Mukwembi, S., SWART, H.C., "On the eccentric connectivity index of a graph", *Disc. Math.*, 2010.
- [11] Ilic, A. and Gutman, I., "Eccentric connectivity index of chemical trees", *MATCH Commun. Math. Comput. Chem.*, vol. 65, pp. 731-744, 2011.
- [12] Zhou, B., "On eccentric connectivity index", *MATCH Commun. Math. Comput. Chem.*, vol. 63, pp. 181-198, 2010.
- [13] Ashrafi, A. R., Doslic, T. and Saheli, M., "The eccentric connectivity index of TUC4C8(R) nanotubes", *MATCH Commun. Math. Comput. Chem.*, vol. 65, pp. 221-230, 2011.
- [14] Saheli, A. R. Ashrafi and M., "Computing Eccentric Connectivity Index of A Class of Nanostar Dendrimers", *Kragujevac J. Sci.*, vol. 34, pp. 65-70, 2012.
- [15] Yarahmadi, Z., "Eccentric Connectivity and Augmented Eccentric Connectivity Indices of N-Branched Phenylacetylenes Nanostar Dendrimers", *Iranian Journal of Mathematical Chemistry*, vol. 1, pp. 105-110, 2010.
- [16] Yarahmadi, Z. and Fath-Tabar, G.H., "The Wiener, Szeged, PI, vertex PI, the first and second Zagreb indices of N-branched phenylacetylenes dendrimer", *MATCH Commun. Math. Comput. Chem.*, vol. 65, no. 1, pp. 201-208, 2011.
- [17] Xu, X., Guo, Y., "The Edge Version of Eccentric Connectivity Index", *International Mathematical Forum*, vol. 7, pp. 273 - 280, 2012.
- [18] Nejati, A., Alaeiyan, M., "The edge version of MEC index of one-pentagonal carbon nanocones", *Bulgarian Chemical Communications*, vol. 46, pp. 462-464, 2014.
- [19] Nejati, A., Alaeiyan, M., "The edge version of MEC index of linear polycene parallelogram benzenoid", *optoelectronics and advanced materials – rapid communications*, vol. 9, pp. 813- 815, 2014.
- [20] Sara Mehdipour, Mehdi Alaeiyan, Ali Nejati, "Computing Edge Version of Eccentric Connectivity Index of Nanostar Dendrimers", *Kragujevac J. Sci.*, vol. 40, pp. 49-56, 2018.
- [21] Sara Mehdipour, Mehdi Alaeiyan, Ali Nejati, "Computing eccentric connectivity index of nanostar dendrimers", *Acta Chimica Slovaca*, vol. 10, no. 6, pp. 96-100, 2017.
- [22] Nilanjan De, Abu Nayeem SkMd, "Computing the F-index of nanostar dendrimers. Pacific Science Review", *A: Natural Science and Engineering*, vol. 18, pp. 14-21, 2016.